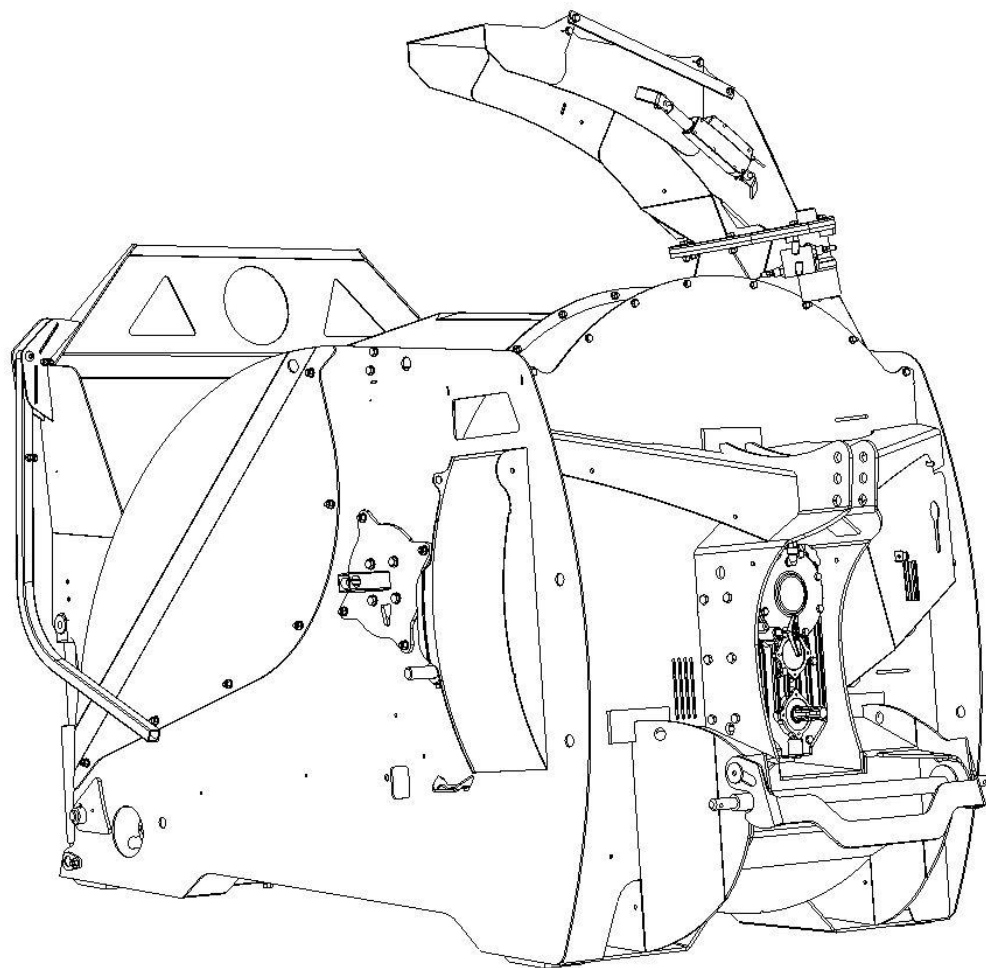


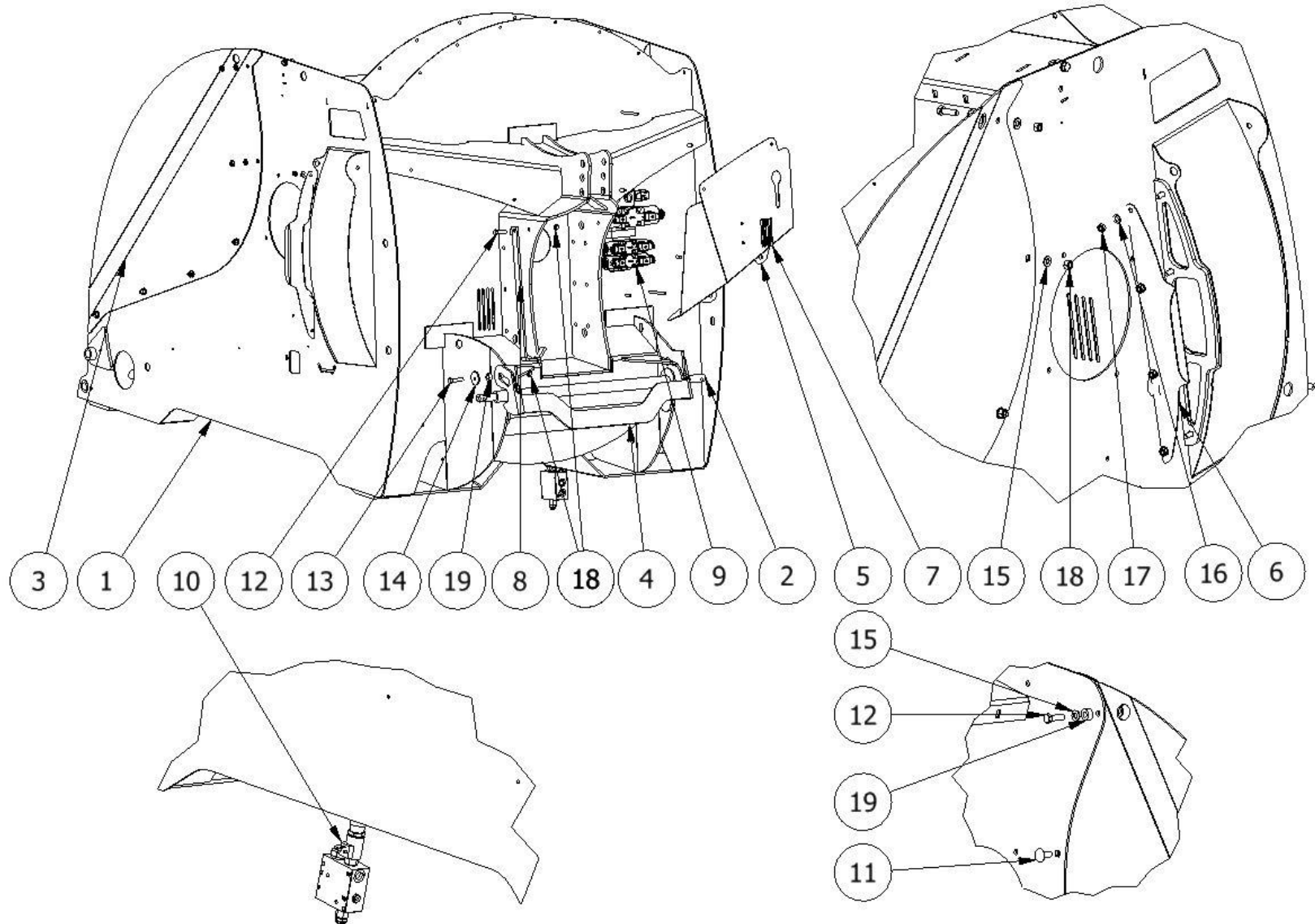
3 point straw blower



- Standard cover
- Turbine
- Chute
- Standard
- Sectioned beater bar
- Door
- Walking triple floor
- V-Cut
- Spraying

Order form on the inside of the back cover, send it to us by email magasin@emily.fr

Standard cover



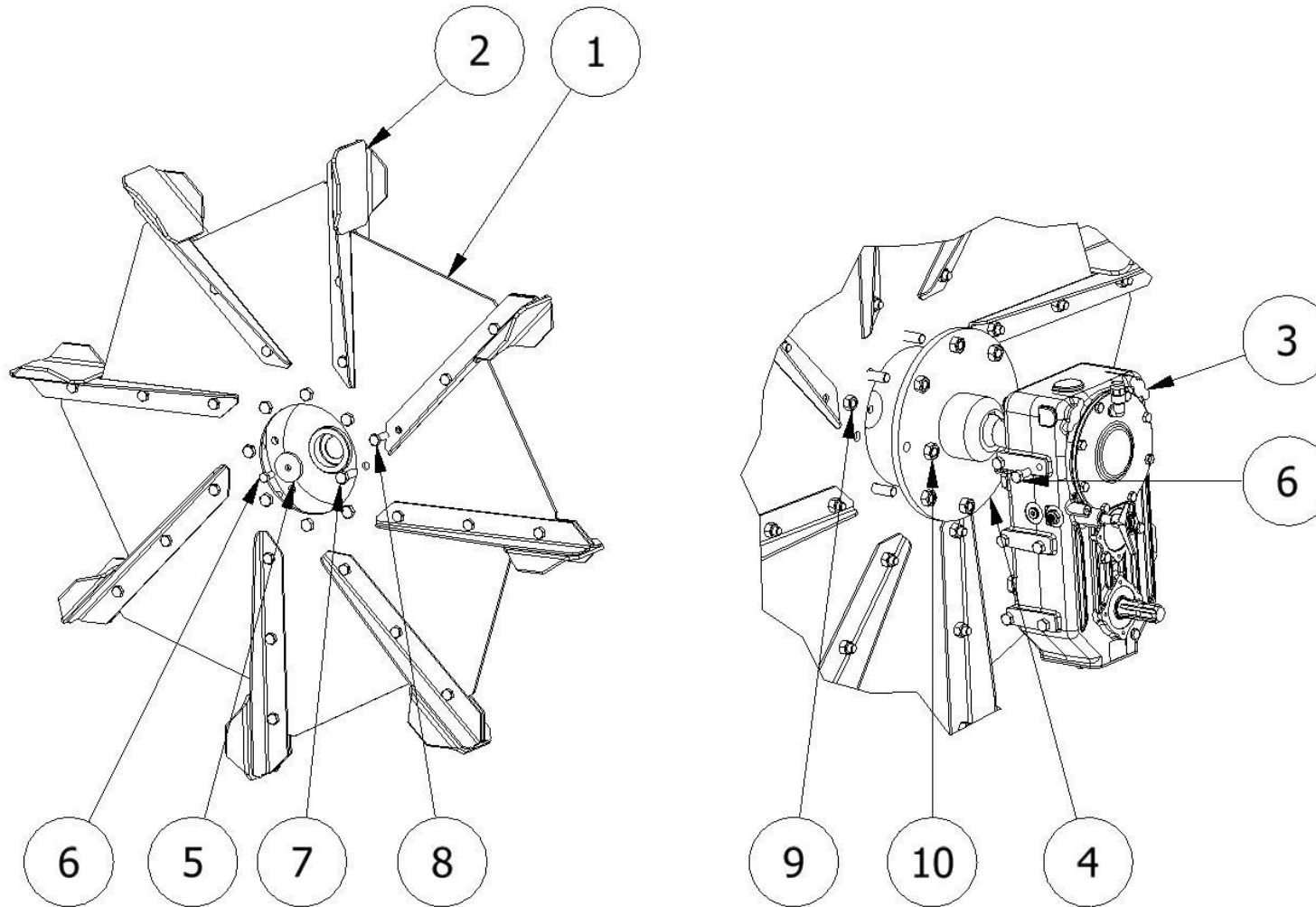
Order form on the inside of the back cover, send it to us by email magasin@emily.fr

Standard cover

N°	REFERENCE	NAME	QTY
1	PAICOGPA3PT	3Pt cover GPA	1
2	SE-000027	Hitch bar	1
3	98PR180B	Removable side plate	2
4	98PR1154D	Hitch bar lock	1
5	98PR118Y	Hydraulic housing	1
6	98pr060y	Access panel for jamming	1
7	PC-00001309	Electrical unit support	1
8	APLAT30x8L580	Flat bar 30x8 L=580	1
9	HDIST4ECETOP5-01	Hydraulic unit	1
10	HCHYDDIV3/4-50	Flow divider 0/50 L/min	1
11	VTRCC12x30	Bolt TRCC M12x30	10
12	VH12x40	Bolt H M12x40	2
13	VH12x50	Bolt H M12x50	2
14	VR12L	Large flat washer 12	2
15	VR12	Flat washer 12	24
16	VR10	Flat washer 12	4
17	VH10F	Self-locking nut 10	4
18	VH12F	Self-locking nut 12	17
19	PC-00001523	Spacer 13/ 25 L=12.5	6

Order form on the inside of the back cover, send it to us by email magasin@emily.fr

Turbine

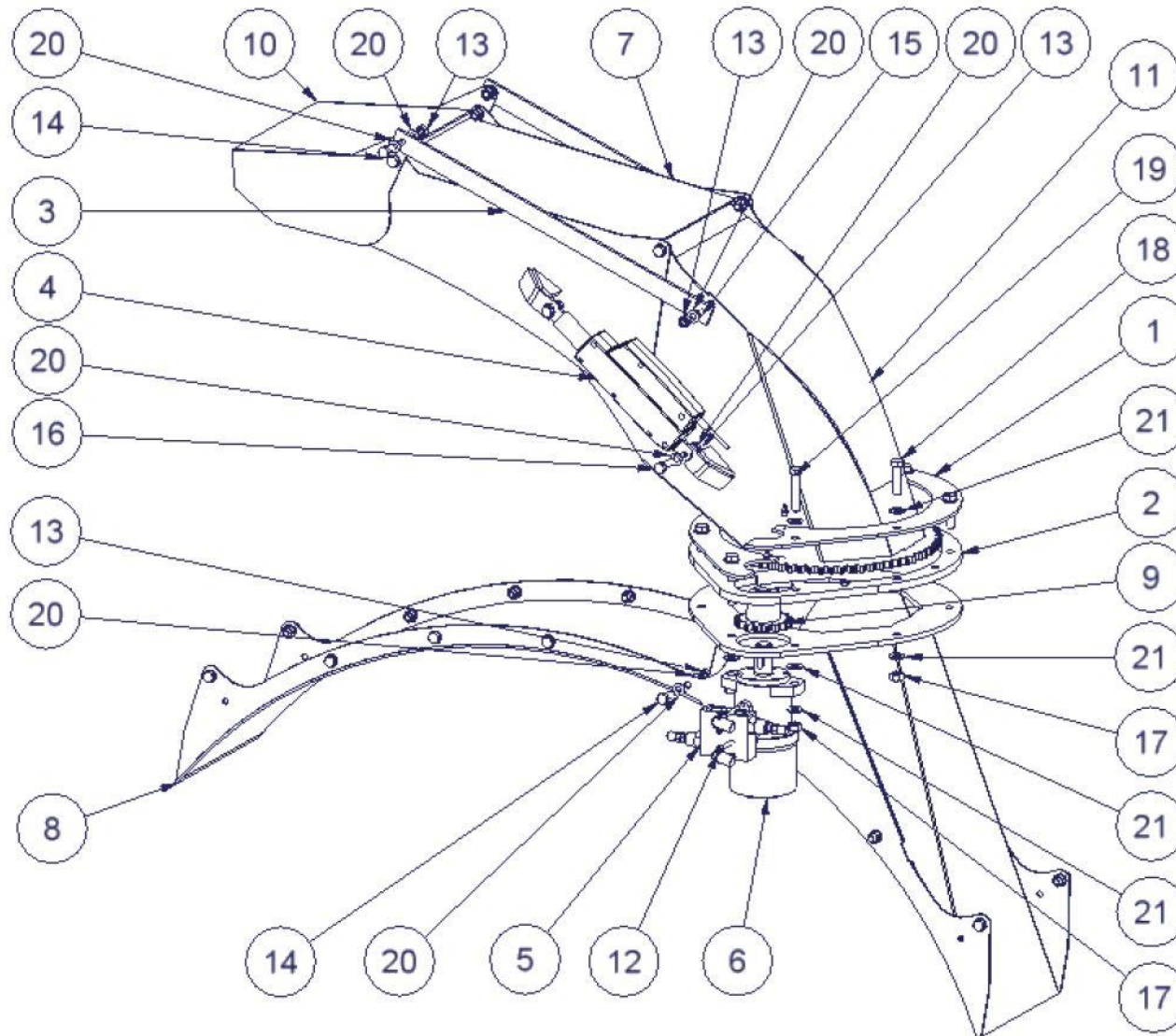


Order form on the inside of the back cover, send it to us by email magasin@emily.fr

Turbine

N°	REFERENCE	NAME	QTY
1	98pr589d	Turbine flange	1
2	PAIGPAMAINTURB	Turbine blade	8
3a	HCENTGPA	Transmission case	1
3b	HCENTCARDAN-02	Friction shaft	1
3c	HCENTCARDAN-05	Protective housing support	1
3d	HCENTCARDAN-04	Protective housing	1
4	OPR024	Turbine support GPA 3 pts	1
5	98pr1155d	Turbine retention washer	1
6	VH14x30	BOLT H HM14x30	13
7	VH18x50	Bolt H M18x50	8
8	VH16x45	Bolt H M16x45	24
9	VH16F	Self-locking nuts 16	24
10	VH18F	Self-locking nuts 18	8

Chute



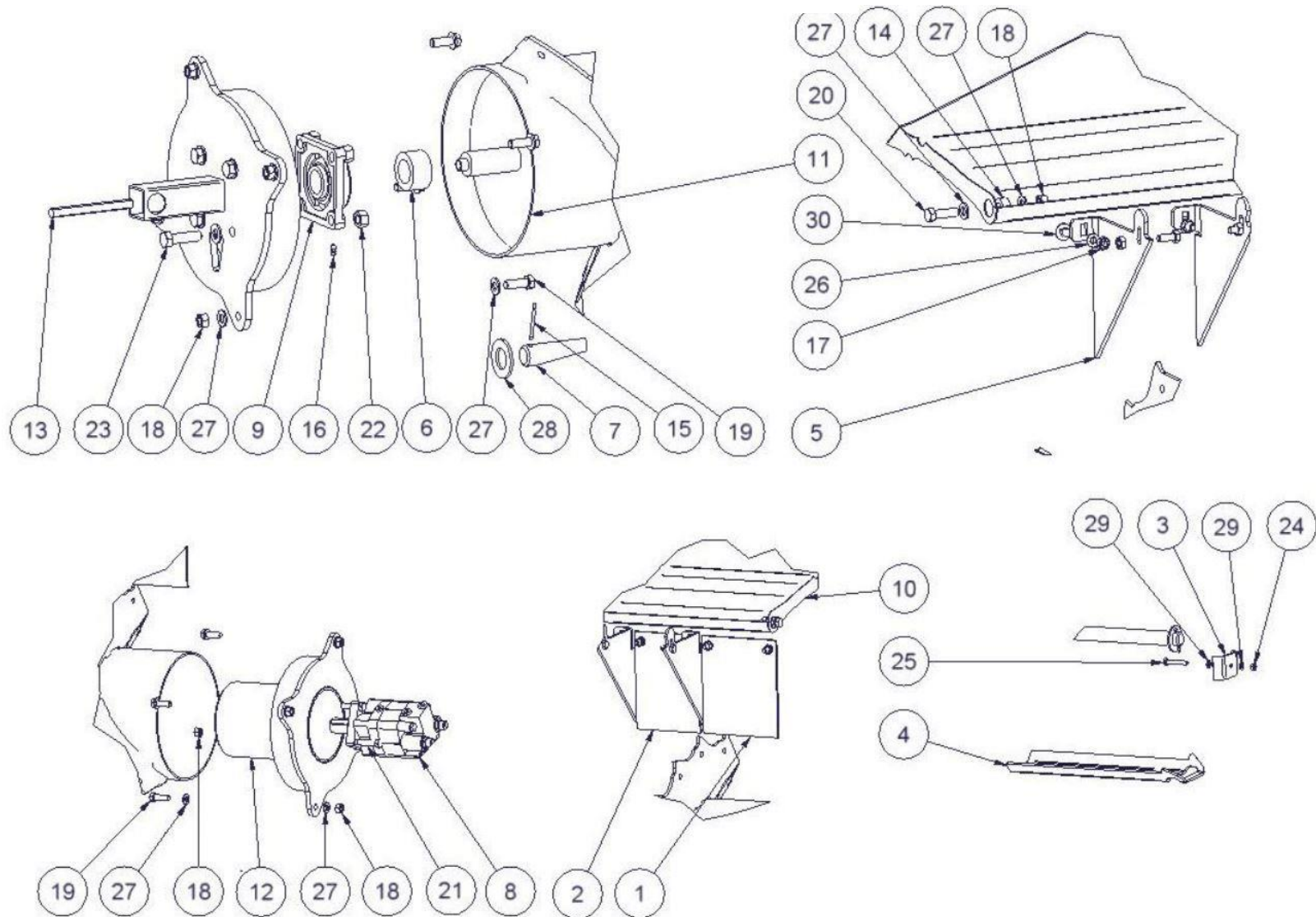
Order form on the inside of the back cover, send it to us by email magasin@emily.fr

Chute

N°	REFERENCE	NAME	QTY
1	98pr144b	Inter turbine plate GP	2
2	98pr157f	Chute centring device	1
3	APLAT30x6L565	Flat bar 30x6 L=565	2
4	EVERI12V100-750-01	Electrical actuator	1
5	HCHYDLIM4F	Flangeable double pressure limiter	1
6a	HMOTEEP200E	EPM motor 200 D25	3
6b	HPJNTMEPM200	Pack of seals for EPM 200 D25	1
7	PAIGPAINTERGOUL	Inter chute	1
8	PAIGPAINTERTURB	Inter turbine	1
9	PAIGPAROUE	Chute guide wheel	1
10	PAIGPASORTIEGOUL	Chute outlet	1
11	PAIGPASORTURB	Turbine outlet	1
12	VCHC6x40	Bolt CHC M6x40	4
13	VH10F	Self-locking nuts 10	26
14	VH10x25	Bolt H M10x25	22
15	VH10x35	Bolt H M10x35	2
16	VH10x40	Bolt H M10x40	2
17	VH12F	Self-locking nuts M12	8
18	VH12x45	Bolt H M12x45	6
19	VH12x60	Bolt H M12x60	2
20	VR10	Flat washer 10	52
21	VR12	Flat washer 12	18

Order form on the inside of the back cover, send it to us by email magasin@emily.fr

Standard beater bar

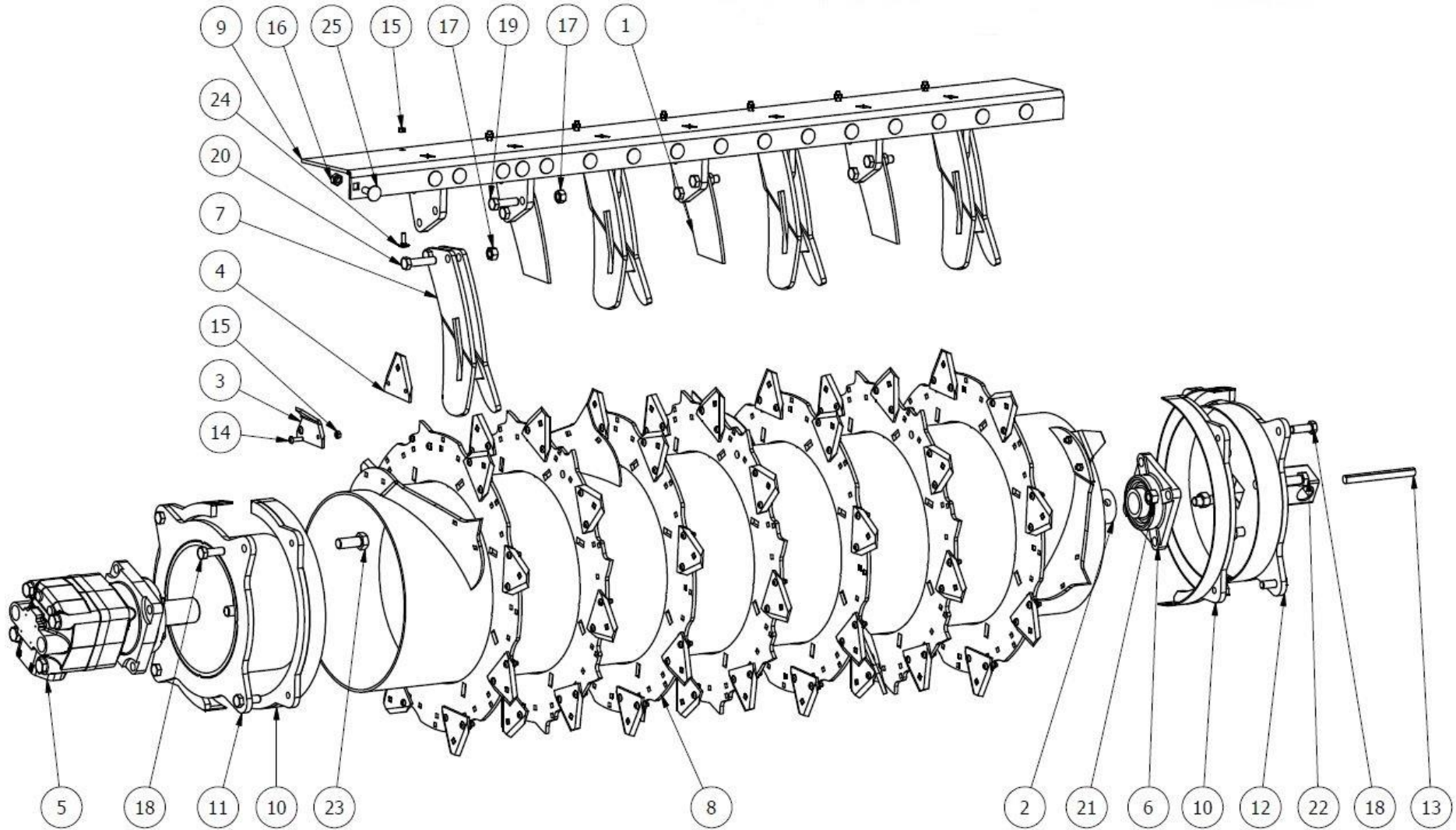


Order form on the inside of the back cover, send it to us by email magasin@emily.fr

Standard beater bar

N°	REFERENCE	NAME	QTY
1	80PR007A-51	Non-return flap 1 GPA	1
2	80PR008A-51	Non-return flap 2 GPA	1
3	98pr119a	Motor support hose guide	1
4	98pr173b	Stone tray GPA	2
5	98pr253c	Tine GPA	7
6	AEBCA35x55L30	Bearing bush 35x55 l=30	1
7	AETIR30L1415	Round bar 30 L=1415	1
8a	HMOTEEPMS160E	EMPS motor 160 D32	1
8b	HPJNTMEPMS	Pack of seals for EPMS motor	1
9	HROUL35	Self-aligning bearing 4 holes	1
10	PAIGPACASQ	Mobile cover GPA	1
11	PAIGPADEMELEUR	Beater bar	1
12	PAISUPMOTGPA	Beater bar motor support	1
13	PPROTRD12POLYL130	Round polyamide bar 12x130	1
14	UEM039	Spacer 13x25 L=12,5	2
15	VGf6x50	Elastic pin 6x50	2
16	VGRM6C45	Elbow greaser 6	1
17	VH10F	Self-locking nuts 10	7
18	VH12F	Self-locking nuts M12	14
19	VH12x35	Bolt H M12x35	8
20	VH12x40	Bolt H M12x40	2
21	VH12x45	Bolt H M12x45	4
22	VH14F	Self-locking nuts 14	4
23	VH14x50	Bolt H M14x50	4
24	VH8	Nut 8	1
25	VH8x50	Bolt H M8x50	1
26	VR10	Flat washer 10	7
27	VR12	Flat washer 12	18
28	VR30	Flat washer 30	2
29	VR8	Flat washer 8	2
30	VTRCC10X30	Bolt TRCC 10X30	10

Sectioned beater bar



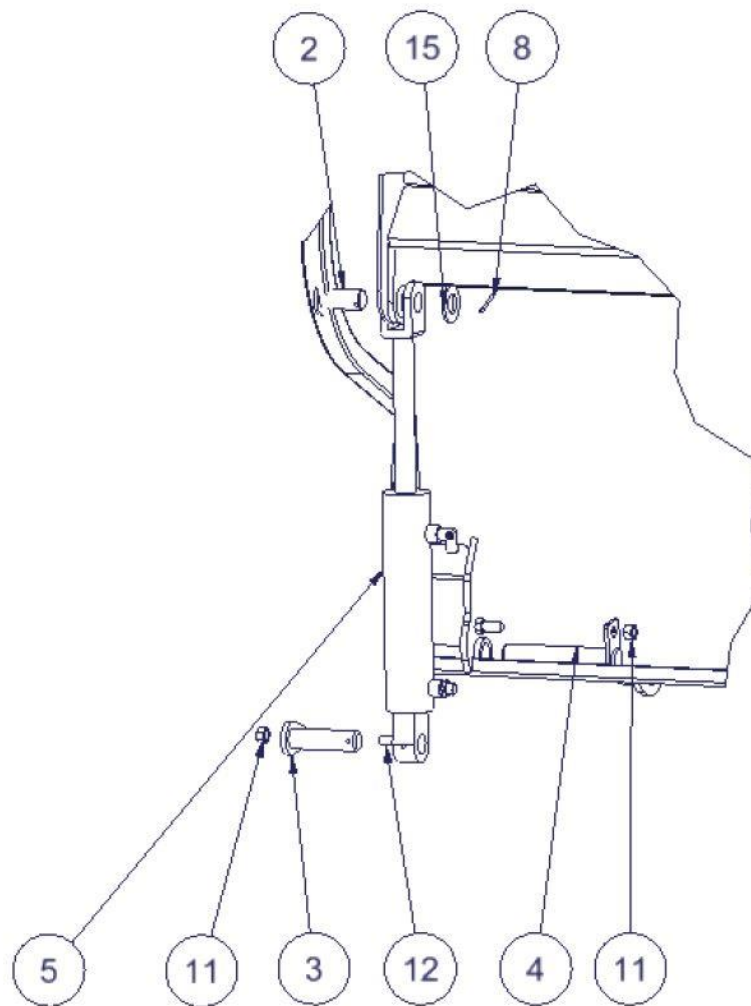
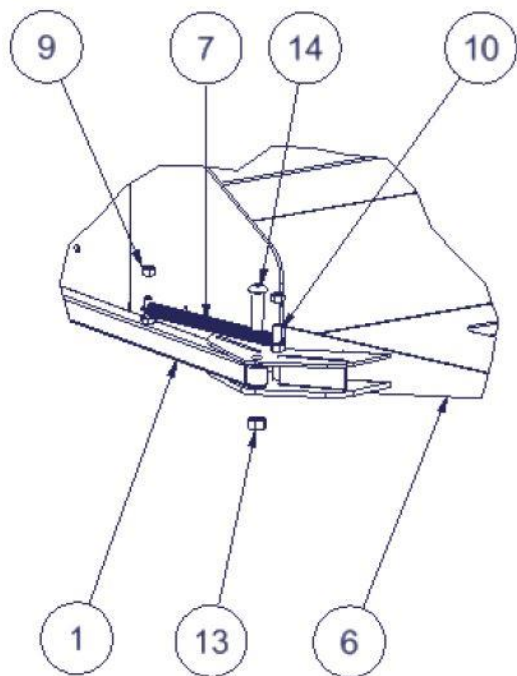
Order form on the inside of the back cover, send it to us by email magasin@emily.fr

Sectioned beater bar

N°	REFERENCE	NAME	QTY
1	98PR370B	STRAIGHT COUNTER CUTTER	3
2	AEBCA35x55L30	BEARING BUSH 35X55 L30	1
3	FCOUTMEL76X60	CURVED CUTTER	2
4	FCOUTMEL76X70	STRAIGHT CUTTER	56
5a	HMOTEEPMT160E40	EPMT MOTOR 160 D40	1
5b	HPJNTMEPMT	PACK OF SEALS FOR EPMT	1
6	HROUL35/UCF207	SELF-ALIGNING BEARING BUSH 4 HOLES	1
7	PAIGPACOUT	V-SHAPED COUNTER CUTTER	4
8	PAIGPADEMELEUR-01	SECTIONED BEATER BAR DRUM	1
9	PAIGPASUPCOUT	COUNTER CUTTER SUPPORT ANTI-WRAPPING SYSTEM	1
10	PAISUPANTIENROUL	SUPPORT	4
11	PAISUPMOTGPA-01	BEATER BAR MOTOR SUPPORT	1
12	PAISUPPALGPA-01	BEATER BAR BEARING SUPPORT	1
13	PPROTRD12POLYL130	ROUND POLYAMIDE BAR 12X130	1
14	VBHC6X20CL10.9	BOLT BHC M6X20 CL10, 9	116
15	VH6F	SELF-LOCKING NUTS M6	123
16	VH10F	SELF-LOCKING NUTS M10	5
17	VH12F	SELF-LOCKING NUTS M12	14
18	VH12x35	BOLT H M12X35	8
19	VH12x40	BOLT H M12X40	6
20	VH12x50	BOLT H M12X50	8
21	VH14F	SELF-LOCKING NUTS M14	4
22	VH14x50	BOLT H M14X50	4
23	VH16x40	BOLT H M16X40	4
24	VTRCC6X20	BOLT TRCC M6X20	7
25	VTRCC10X30	BOLT TRCC M10X30	17

Order form on the inside of the back cover, send it to us by email magasin@emily.fr

Door



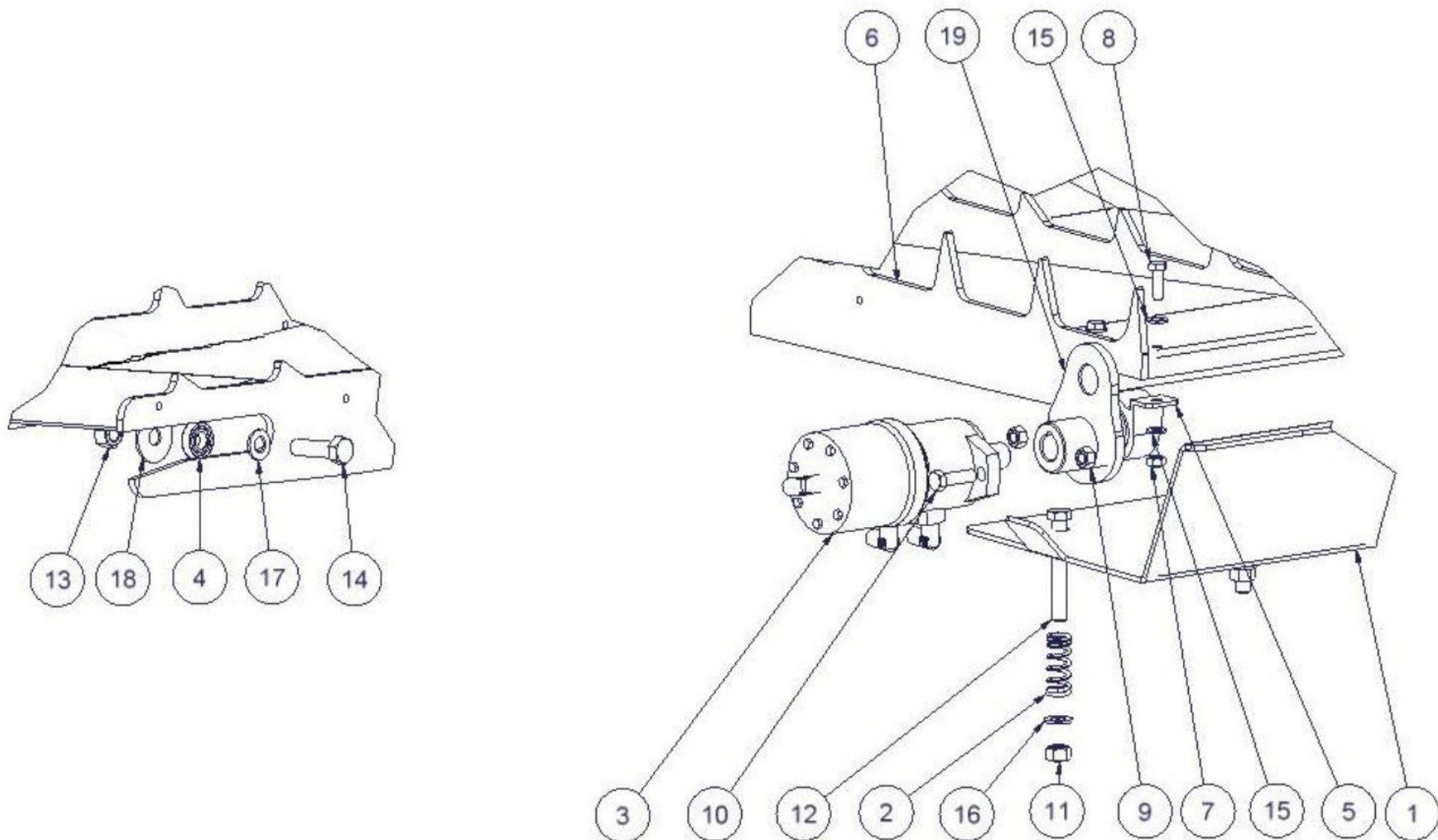
Order form on the inside of the back cover, send it to us by email magasin@emily.fr

Door

N°	REFERENCE	NAME	QTY
1	PAIGPABRAS	Retaining arm	2
2	FAXECOL30L62	Shouldered pin 30 L=62	2
3	FAXEORE30L105	Flanged rod 30 L=105	2
4	EMIAXE30L169	Flanged rod 30 L=169	2
5a	HVERI3050C200-E01	Actuator 30X50C200	2
5b	HPJNT3050	Pack of seals for actuator 30x50	1
6	PAIGPAPORTE-02	Loading door version 2	1
7	FRESS20X200X3	Spring 200x20x3	2
8	VGf6x50	Elastic pin 6x50	2
9	VH12F	Self-locking nuts 12	4
10	VH12x90	Bolt H M12x90	2
11	VH14F	Self-locking nuts 14	4
12	VH14x35	Bolt H M14x35	4
13	VH16F	Self-locking nuts 16	2
14	VCBHC16x60	Bolt DUOMIX M16x60	2
16	VR30	Flat washer 30	2

Order form on the inside of the back cover, send it to us by email magasin@emily.fr

Walking triple floor

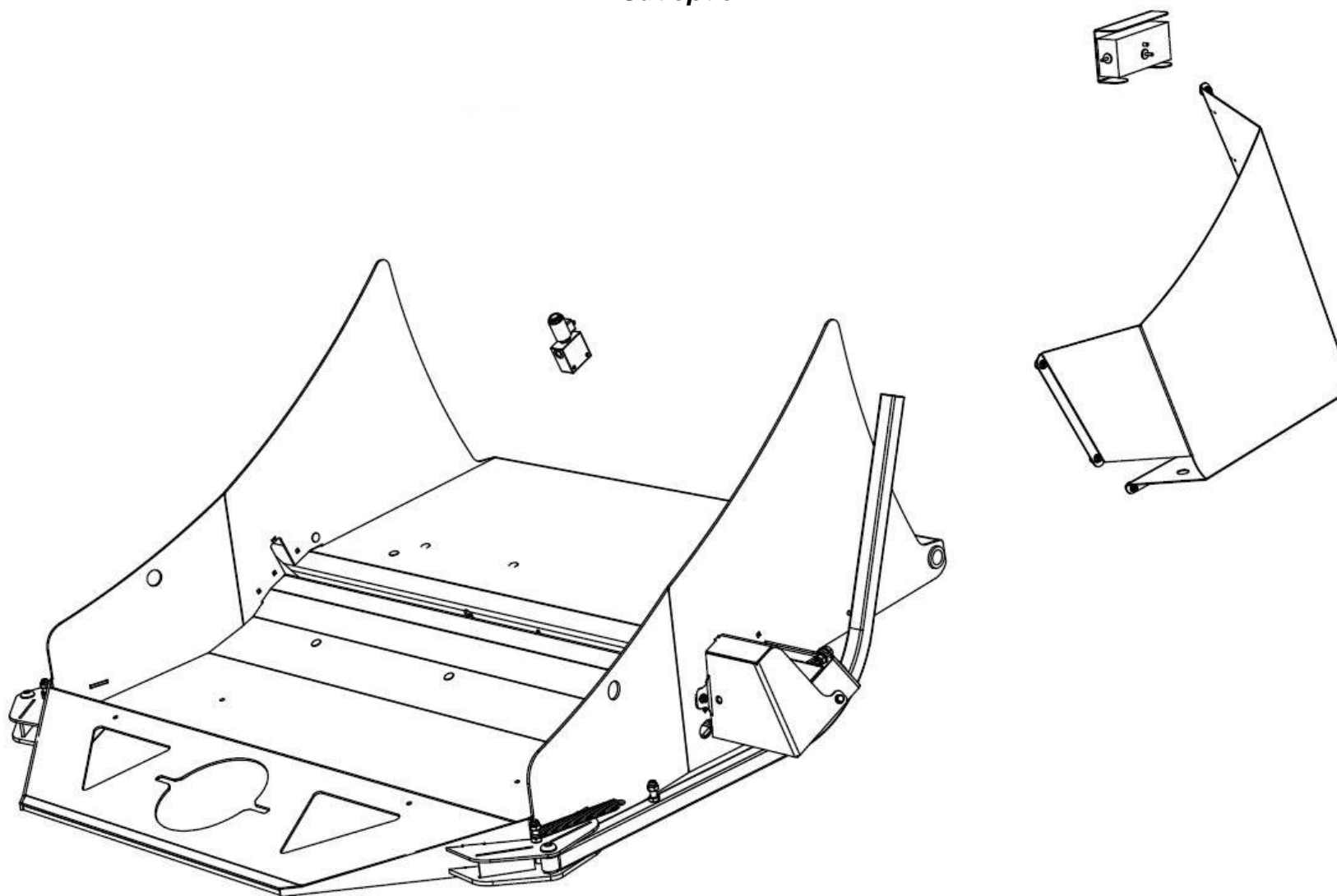


Order form on the inside of the back cover, send it to us by email magasin@emily.fr

Walking triple floor

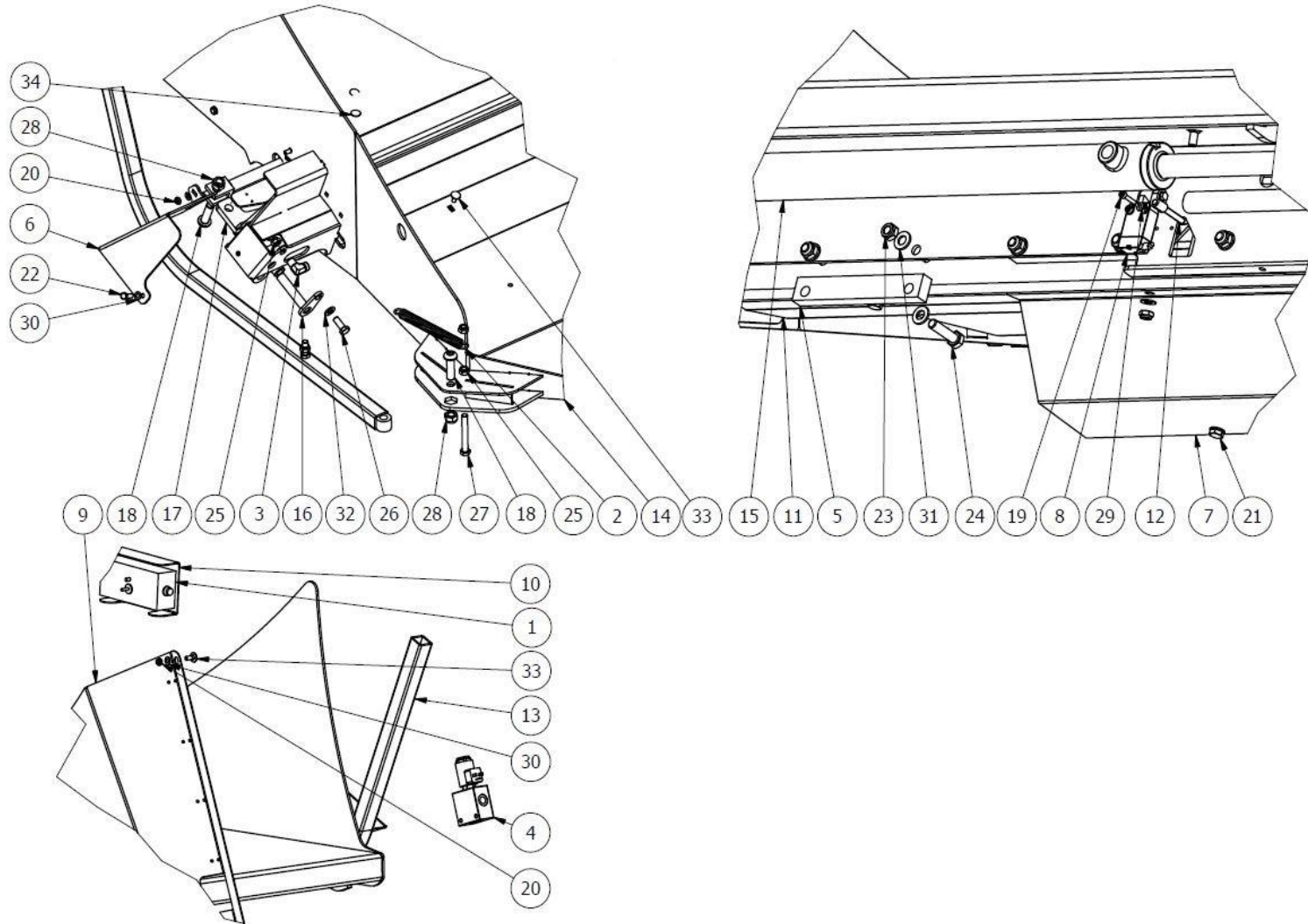
N°	REFERENCE	NAME	QTY
1	98PR242B	Mobile flap GPA	1
2	FRESS16.4X70X3.8	Compression spring 16.4x70 WIRE 3.8MM	3
3a	HMOTEEP200E	EPM motor 200 D25	2
3b	HPJNTMEPM	PACK OF SEALS FOR EPM	1
4	HROUL60032RS	BEARING 17x35x10	6
5	HROUL6232	Sheet steel bearing bush	6
6a	PAIGPAAMENEUR-02	Central walking triple floor	1
6b	PAIGPAAMENEUR-03	External walking triple floor	2
7	VH10F	Self-locking nuts 10	12
8	VH10x30	Bolt H M10x30	12
9	VH12F	Self-locking nuts M12	12
10	VH12x40	Bolt H M12x40	12
11	VH14F	Self-locking nuts 14	3
12	VH14x100	Bolt H M14x100	3
13	VH16F	Self-locking nuts 16	6
14	VH16x55	Bolt H M16x55	6
15	VR10	Flat washer 10	8
16	VR14	Flat washer 14	3
17	VR16	Flat washer 16	6
18	VR16L	Large flat washer 16	6
19	PAIGPABIELLE	Walking triple floor feeder shaft 3 base plate	1

V-Cut option



Order form on the inside of the back cover, send it to us by email magasin@emily.fr

V-Cut option



Order form on the inside of the back cover, send it to us by email magasin@emily.fr

V-Cut option

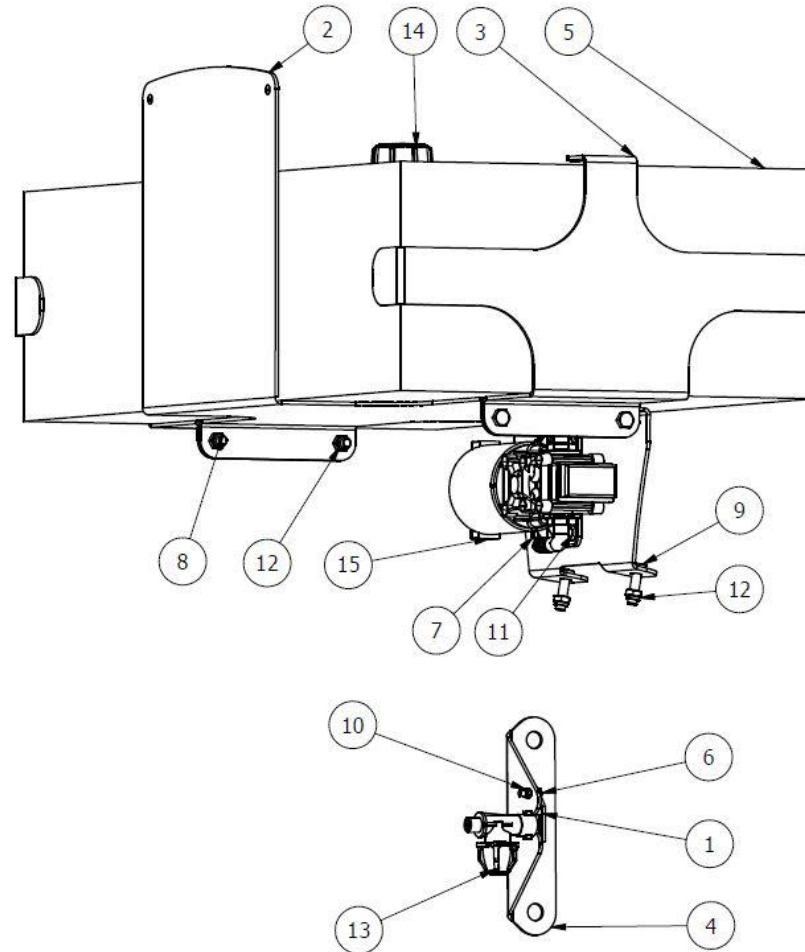
N°	REFERENCE	NAME	QTY
1A	EACCEBOIT3BP-GPA	CONTROL UNIT GPA TELESCO	1
1B	EACCEBOIT3BP-GPA-01	CONTROL UNIT GPA 3PT	1
2	PC-00001050	TRACTION SPRING 187.5X20X3	2
3	PC-00001282	CONNECTOR CM12 12X17	4
4	PC-00003325	PILOT VALVE 3X2	1
5	PC-00007083	CUTTER WEAR PAD	6
6	PC-00007101	TWINE CUTTER COVER	2
7	PC-00007102	SHEET EP2	1
8	PC-00007103	LEVER POSITION SENSOR	1
9A	PC-00007116	LINK HOUSING GPA TELESCO	1
9B	PC-00007410	LINK HOUSING GPA 3PT	1
10	PC-00008096	EXT. UNIT SUPPORT	1
11	PC-00008097	ACTUATOR GUARD	1
12	PC-00008098	EXTENDER 6	1
13	SE-000860	BALE RETENTION ARM	2
14	SE-001470	TWINE CUTTER HOLDER	1
15	SE-001471	ACTUATOR 25X40 C750	2
15-A	HPJNT2540-02	PACK OF SEALS FOR ACTUATOR 20X40	2
16	SE-001474	FLANGED ROD 18X95	2

V-Cut option

N°	REFERENCE	NAME	QTY
17	SE-001757	TWINE CUTTER BLADE	2
18	VBHC16X55	BOLT BHC M16 X55	4
19	VCHC4X20	BOLT CHC M4X20	2
20	VH8F	HEXAGONAL LOCKNUT M8	17
21	VH8X10	BOLT H M8X10	5
22	VH8X25	BOLT H M8X25	2
23	VH10F	HEXAGONAL LOCKNUT M10	12
24	VH10X40	BOLT H M10X40	12
25	VH12F	HEXAGONAL LOCKNUT M12	8
26	VH12X30	BOLT H M12X30	2
27	VH12X90	BOLT H M12X90	2
28	VH16F	HEXAGONAL LOCKNUT M16	4
29	VR4	FLAT WASHER 4	2
30	VR8C	FLAT WASHER FOR BODYWORK 8	25
31	VR10C	FLAT WASHER 10	24
32	VR12	FLAT WASHER 12	4
33	VTRCC8X20	BOLT TRCC M8X20	13
34	VTRCC8X50	BOLT TRCC M8X50	1

Order form on the inside of the back cover, send it to us by email magasin@emily.fr

Spraying



Spraying

N°	REFERENCE	NAME	QTY
1	98PR035X	NOZZLE LOCK	1
2	98PR291X	SPRAYING SUPPORT	1
3	98PR292X	SIDE SPRAYING SUPPORT	2
4	98PR293X	SPRAYING NOZZLE SUPPORT	1
5	PCUVE50	TANK 50 LITRES	1
6	VH5X16	Bolt H M5X13	1
7	VH6X20	Bolt H M6X20	4
8	VH8X20	Bolt H M8X20	4
9	VH8X30	Bolt H M8X30	2
10	VH5F	Locknuts M5	1
11	VH6F	Locknuts M6	4
12	VH8F	Locknuts M8	6
13a	HARROBUSEM	SPRAY WITH FILTER BROWN	1
13b	HARROBUSEJ	SPRAY WITH FILTER YELLOW	1
14	HARROCL11/4	FILLER CAP	1
15	HARROPOMPE-01	SPECIAL PUMP GPA	1



ORDER FORM

Date of order:

Requested delivery date:

Customer account n°:

Order ref.:

Contact:

Customer reference:

Invoice address:

Delivery address:

Mode of transport: CourierExpressGrouped

IN ORDER TO REDUCE THE LEAD TIME AS MUCH AS POSSIBLE, PLEASE INCLUDE THE REFERENCES OF THE ITEMS ORDERED

Reference:	Name	Qty	Tariff price.	Amount excl. VAT	Availability
					Column reserved for use by EMILY

Observations:

Sub-Total:

Discount in %:

Net amount excl. VAT:

SHIPPING:

TOTAL excl. VAT:



Placing an order with EMILY implies the customer's acceptance of the general sales conditions below.

1 - General clause – Prices:

Our sales are subject to the present general terms and conditions which prevail over all purchase conditions, unless we expressly waive them.

Our prices are in Euros, excluding taxes, packaging and transport. The applicable prices are those in force on the day of the order, in compliance with the general price lists or the quotations Issued. The characteristics and information contained in our price lists and commercial documents are not contractual and may be modified at any time without notice.

2 - Orders:

All verbal orders must be confirmed in writing. The tool attachment plan must be enclosed with the valid order and signed by the customer after verification, along with the plan of the tool for non-standard orders. First orders will only be processed after the opening of a customer account and acceptance by the customer of EMILY's terms of payment.

3 - Confidentiality:

The studies, plans, drawings and documents provided or sent by EMILY remain our property; they may not be communicated to third parties under any circumstances by the buyer.

4 - Lead-times, delivery, transport:

Our lead-times are only provided as an indication. We reserve the right to split orders according to the respective production of our factory. We reserve the right to choose the carrier and the mode of transport. In the event that the customer imposes the choice of carrier, the customer shall automatically bear the transport costs and the transport guarantee. Claims related to the transport and receipt conditions may only be accepted if they are in writing made on the carrier's delivery note.

5 - Retention of title:

Law n° 80 335 dated 12 May 1980. EMILY retains ownership of the goods sold until the effective payment of the full price in principal and accessories. Cheques, promissory notes, bills of exchange and assignments of receivables are only considered as means of payment from the date of their effective collection. Failure to pay one of the due dates may result in EMILY reclaiming the goods, regardless of where they are located. These provisions do not prevent the transfer to the buyer, upon delivery, of the risks of loss and deterioration of the goods sold as well as the damage they may cause. The customer shall take out insurance from the time of delivery covering the risks that the products may incur or cause. The customer shall inform EMILY of any intervention or claim by a third party likely to infringe its rights on the products so that the latter can oppose it and take any protective measure to preserve its rights. The buyer undertakes to inform its customers of this retention of title clause.

Terms of payment - Penalties:

For the first order, the balance must be paid before shipment. When a cheque or bill of exchange is handed over, the payment is only deemed to have been made when it is finally cashed: the buyer is forbidden to use it as a guarantee. Any dispute relating to the invoice must be made within eight days of receipt of the invoice. EMILY retains the property of the goods until full and final payment of their price. Any delay in payment may, in the absence of regularisation within 8 days of formal notice sent by registered letter with acknowledgement of receipt, lead to the application of a late payment penalty at the ECB refinancing rate plus 10 points. Likewise, any delay in payment shall render payable a fixed indemnity for collection costs of 40 Euros.

6 - Warranty:

All warranty claims can only be considered with our prior written agreement. EMILY is responsible for supplying a product free of any defect that could make it unfit for its intended use. To this end, the customer undertakes to provide all necessary documents and information. The goods sold are guaranteed against any operating defect resulting from a material, manufacturing or design fault

under the conditions below. The malfunction must appear within a period of 6 months from delivery for use of the goods in accordance with the order and our recommendations. The warranty is limited to the repair or replacement of defective parts, with regard to material or manufacturing defects. Under no circumstances shall this warranty be extended by the period of repair or non-use of the equipment. It does not cover transportation, transfer, labour or other costs incurred in carrying out repairs under warranty. EMILY shall not be liable for damages resulting from machine downtime, even if related to a warranty repair, or for any other damages, including without limitation, consequential, incidental, special, excessive or financial damages, (including without limitation, any business interruption or loss of present or future profits) resulting from a defect or failure of the equipment. In the event that the customer is aware of a defect or risk of defect in its supply, whatever its nature, it undertakes to inform EMILY as soon as possible, in order to prevent any difficulties. The warranty will not be valid in the following situations:

- Damage resulting from negligence, for example, incorrect operation or lack of maintenance and care.
- Damage due to misuse, carelessness or accidents, for example, incorrect use, transport or storage, unsuitable operation or physical environment, removal or alteration of identification labels on products or parts, or failure caused by a product for which the supplier is not responsible, fire, negligence and any other cause not directly attributable to the supplier.
- Damage due to normal wear and tear of products or parts.
- Replacements, repairs, alterations, or defective modifications made without the express permission of the supplier.
- Use of parts or components not approved by the supplier.
- Damage during assembly, installation and repair that the supplier has not carried out.
- Damage because EMILY's instructions have not been followed.
- Damage because EMILY's guidelines for use have not been followed.
- Failure to pay in accordance with the terms agreed with the supplier.

For any request for a parts warranty, please provide us with the serial number of the equipment. Any returns of equipment will be handled by the dealer and at its expense (no freight-collect shipments will be accepted). The provisions of this charter apply equally to customers, both French or foreign, and it is the responsibility of the latter to inform themselves of the extent of French and more generally Community legal obligations incumbent on EMILY.

7 - Rightful termination clause:

In the event of non-fulfilment by one party of its obligations, this contract shall be rightfully terminated in favour of the other party without prejudice to any damages that may be claimed from the defaulting party. The termination will take effect 10 days after a formal notice has been sent and has remained unanswered.

8 - Settlement of disputes - Liability:

Unless otherwise stipulated, our prices are always for currently manufactured articles, made of normal grade metal and without commissioning. The nominal loads provided are simply indications. The parts supplied are used at the user's own responsibility. In the event of breakage of a part, our liability is strictly limited to the replacement of the part, if it is recognised as defective, and does not cover any damage caused by this breakage. In the event of a dispute between the parties, the Commercial Court of Brest shall have sole jurisdiction in the matter, in spite of any contradictory clauses that may appear on our customers' order forms. French law is applicable to these general terms and conditions of sale, prevailing over any general terms and conditions of purchase which may be contrary to them.